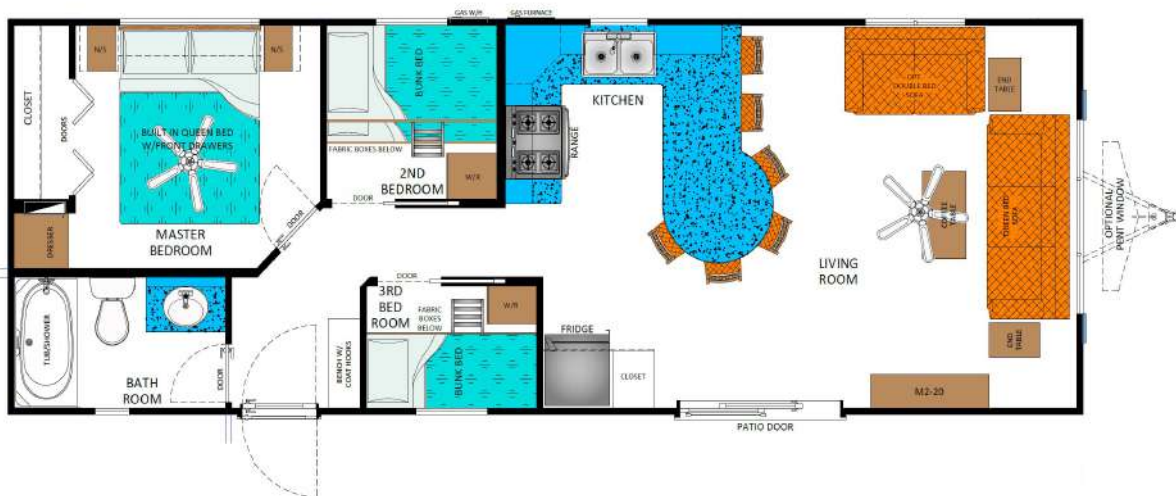


# ParkbridgeResorts.com



**General Coach Frontier**  
**Florence | 3 Bedroom | 39' x 14'**

**\$140,000** + HST

**Financing Available OAC**

**705-750-0507**

**ResortSales@Parkbridge.com**

**Price includes:**

- Factory freight
- Installation & Set up
- Pre-delivery inspection
- Furniture and appliances
- Skirting package (unit only)
- Air conditioning.



Pricing subject to change at any time and without notice. Individual seasonal fees are extra. Sites must be cleared of all existing structures for delivery and installation or additional fees will apply.

All renderings are artist's concept. Colour representations and specifications are approximate and subject to change. All rights reserved. Property purchased may be the mirror image of the floorplan. E.&O.E.

# GENERAL COACH FRONTIER Specifications

## Construction

- Heavy Duty I Beam Steel Chassis with Cross Members, Axles and Detachable Hitch
- Seamless Fibre Mesh Underbelly
- 90" Sidewall Height
- 2"x3" Wall Studding on 16" Centres - R7
- 2"x8" Transverse Floor Joists on 16" Centres - R14
- ¾" T&G Plywood Subfloor Glued & Screwed
- 4/ 12 Roof Pitch w/ Engineered Roof Trusses - R12
- 7/16" OSB Roof Sheathing with 15lb Felt Paper and 30 Year Fiberglass Shingles
- 10" Vented Soffit with 2"x6" Fascia Board
- 6 Mil Vapour Barrier on Roof and Sidewalls
- ¼" OSB Exterior Sheathing with Building Wrap

## Windows & Doors

- White Single Hung Thermopane Vinyl Windows Throughout - NO Grills
- White (6') Vinyl Thermopane Patio Door - No Grills
- Insulated Aluminum Exterior Door with upper Window (32" x 82")
- Aluminum Storm Door with Screen (32" x 80")
- ¾" Window and Door Jambs

## Heating & Cooling

- 40,000BTU Forced Air LP Furnace with Electronic Ignition
- Analog Wall Mount Thermostat
- Heat Duct & Registers Within Insulated Floor Cavity
- Prep Only for Basement Air Conditioning Unit

## Electrical

- 30 Amp Hydro Service with 25' Plug in Cord
- Exterior GFCI Receptacle @ Patio Door
- Exterior Coach Light @ Entrance Door
- LED Flush Mount Pan Lighting Throughout
- USB Combination Outlet in Bunk Room and Living Room
- Decora Style Receptacles & Light Switches Throughout

## Plumbing

- Uponor ProPex - Polyethylene Water Lines
- ABS Drainage / Waste Pipes
- Water Heater By-pass & Low Point Drain
- 16GAL LP Water Heater with DSI Ignition & Lighted Switch

## Kitchen

- Black 5 CuFt Gas Range
- Black 17 CuFt Refrigerator (Top Freezer)
- Black OTR Microwave / Range Hood Combination
- Laminate Kitchen Counter with Snap Edge Finish
- Double Compartment Stainless Steel Sink
- Polished Chrome Single Lever Faucet with Pullout Spray Head
- Custom Built Box Style Modular Cabinetry
- Flat Panel Cabinet Doors with Hidden Hinges
- Flat Panel Drawers with Metal Roller Glides
- Brushed Nickel Cabinet / Drawer Pull Bars

## Plumbing

- Uponor ProPex Polyethylene Water Lines
- On Demand Water Heater
- Frost Free Water Tap
- Low Flush Water Saver Toilet

## Bathroom Fixtures

- Custom Built Modular Cabinet Vanity with Porcelain Sink
- 54" Moulded Fiberglass Tub/Shower
- Polished Chrome Shower Rod with Curtain
- Polished Chrome Towel Bar & Tissue Holder
- Polished Chrome Diverter, Tub Faucet & Shower Head
- Polished Chrome Vanity Faucet
- Polished Chrome towel rack above toilet (floorplan specific)
- 1.28gal Low Flush Residential Toilet with Insulated Tank
- 70 CFM Exhaust Fan
- GFCI Receptacle at Vanity
- Medicine Cabinet with Mirror on Door

## Bedroom Accessories

- Queen Built-In Bed with Headboard, drawers below (front end opening), and Mattress - MBR
- Queen Bedspread, Pillows, Shams & Skirt - MBR
- Bunk Bedspreads, Pillows, and Shams
- Overhead Cabinets - MBR
- (2) Modular Night Stands with Open Shelf
- Closets with Bi-Fold Doors - MBR
- Fabric Storage Bins Below Bottom Bunk - BD#2 & BD#3
- 5" Foam Mattresses on All Bunks
- Powder Coated Steel Railing and Ladder on All Bunks

## Interior Décor

- Minimum 2"x3" Interior Wall Construction on 16" Centres
- Vinyl Wrapped Drywall Ceiling Throughout
- White 2 Panel Interior Doors Throughout
- Brushed Nickel Door Knob Hardware Throughout
- Durable Vinyl Flooring Throughout
- Custom Designed Coordinated Valances Throughout
- White Day/ Night Shades Throughout Unit with Patio Door Vertical Blind
- Pre-finished White Wire Shelving/ Closet Rod
- ¾" Door & Window Jambs Throughout
- 2 ¾" Crown Molding Throughout
- 1 7/16" Door and Window Casing Throughout
- (3) Cabinet Colour Options Available
- (5) Interior Décor Packages Available

## Exterior Finishes

- GENTEK D-4.5 Vinyl Siding - Driftwood Finish
- Colonial Style Shutters - Front End Wall
- White Vinyl Soffit & Aluminum Fascia
- Colonial Style Shutters - Front End Wall
- White Vinyl Soffit & Aluminum Fascia

## Additional Furniture Included (Floor Plan Specific)

- Queen Fabric Sofa w/ Hide a Bed / Sectional / Ottoman / Fabric Arm Chair(s)
- (2) End Tables & Coffee Table / Dinette Table with (4) Seat Chairs / Bar Stools

Specifications may vary within different models and are subject to change without notice. E.&O.E.